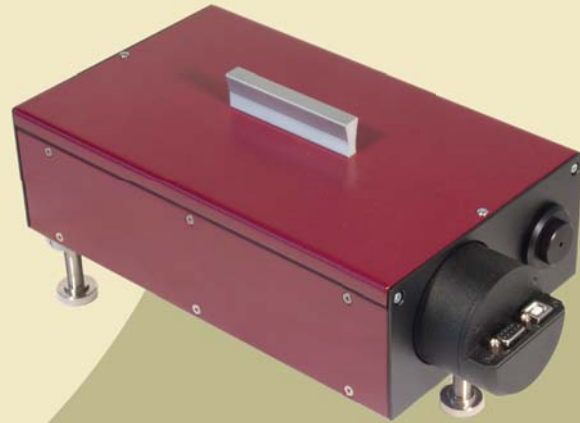


Diagnostics



# ASF Single-Shot Autocorrelator

- CCD detector
- Sensitivity <math>< 10 \mu\text{J}</math>
- LabView driver included



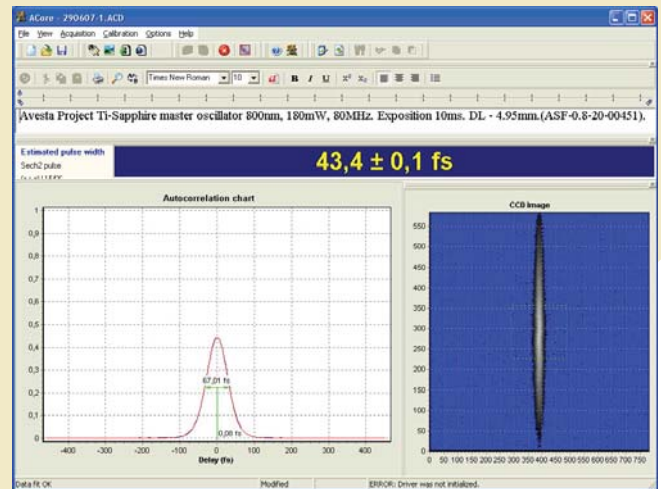
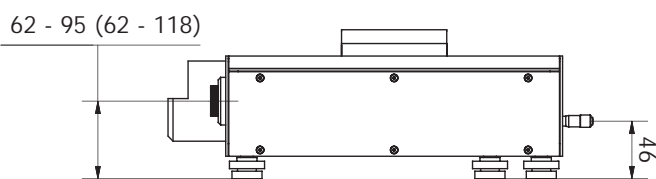
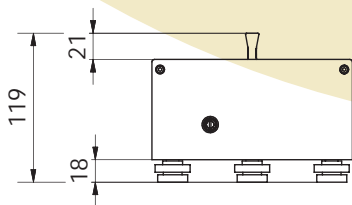
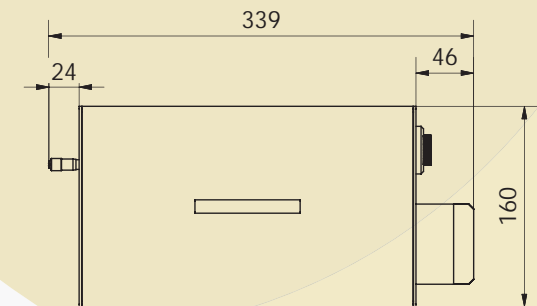
ASF-20 single-shot autocorrelator

## Product overview

The ASF single-shot autocorrelator is designed for monitoring the pulse duration of ultrafast oscillators and amplifiers, as well as for real-time amplifier systems tuning. The CCD camera registers the transverse section of the non-collinear generation of the second harmonic of the input radiation (the SH is generated in a non-linear crystal). PC USB interface and Windows acquisition software provide for smooth and easy data transition and registration, while additional LabView-compatible drivers offer extended flexibility and on-line control in complex multi-stage experimental setups.

The two basic models offer measurement in ranges of 20 to 200 fs (ASF-20) and 200 to 2000 fs (ASF-200) with various wavelength ranges possible. Please feel free to enquire about custom pulse durations and wavelength ranges.

## ASF technical specifications



ASF software

	ASF-20	ASF-200
Wavelength range, nm	700-1000, 1000-1700*	
Pulse duration range, fs	20-200	200 - 2000
Input pulse energy, nJ	>1000 (1-10 Hz) >1.5 (>100 MHz)	
Input repetition rate, Hz	1-10 Hz in single-shot mode >10 Hz in multiple-shot mode	
Input polarization, linear	horizontal (vertical by request)	
Processing	USB controller	
* - other wavelength ranges available upon request		